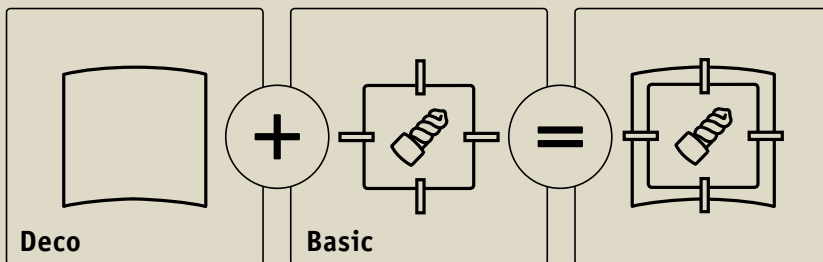




Nakombinujte si sami svůj osobní systém světel
Stwórz sobie sam własny system oświetlenia
Составьте сами собственную световую систему



Square Branches

max. 40W
 ∅58 ⇔ 320 ∩ 320mm
 EAN 4000870 702383
702.38 new



Square Butterflies

max. 40W
 ∅58 ⇔ 320 ∩ 320mm
 EAN 4000870 702406
702.40 new



Square Twine

max. 40W
 ∅58 ⇔ 320 ∩ 320mm
 EAN 4000870 702420
702.42 new

Satén
 Satynowany
 Сатин



Basic HF-Sensor

incl. 1x15W, E27
 230V
 ∅260 ⇔ 260 ∩ 50mm
 EAN 4000870 701263
701.26



Square Basic

incl. 1x15W, E27
 230V
 ∅260 ⇔ 260 ∩ 50mm
 EAN 4000870 700495
700.49

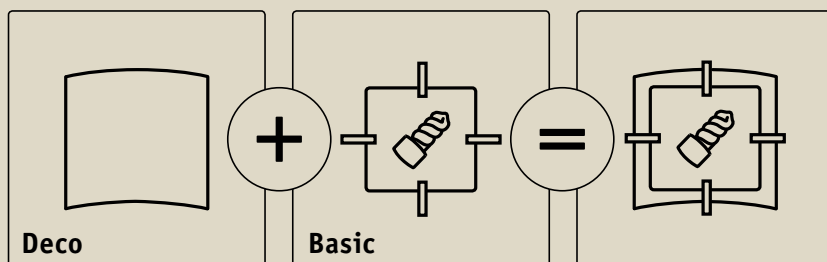


Square Basic

incl. 1x22W, 2GX13
 230V
 ∅260 ⇔ 260 ∩ 50mm
 EAN 4000870 700471
700.47



Nakombinujte si sami svůj osobní systém světel
Stwórz sobie sam własny system oświetlenia
Составьте сами собственную световую систему



Circle Branches

max. 40W
 ∅85 ∅295mm
 EAN 4000870 702376
702.37 new



Circle Butterflies

max. 40W
 ∅85 ∅295mm
 EAN 4000870 702390
702.39 new



Circle Twine

max. 40W
 ∅85 ∅295mm
 EAN 4000870 702413
702.41 new

Satén
 Satynowany
 Сатин



Basic HF-Sensor

incl. 1x15W, E27
 230V
 ∅50 ∅310mm
 EAN 4000870 701256
701.25



Circle Basic

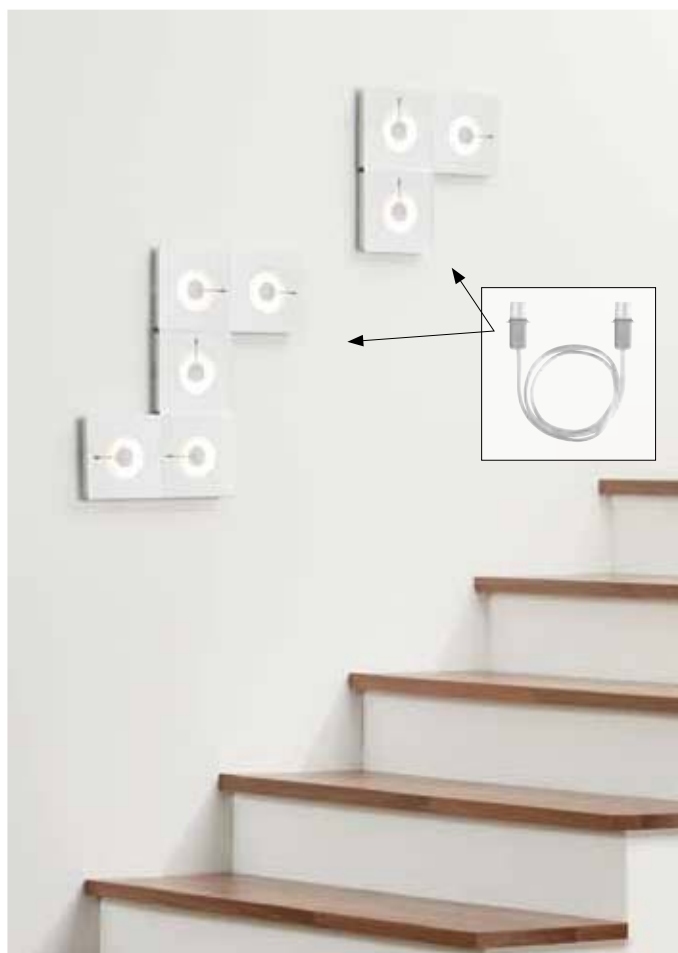
incl. 1x15W, E27
 230V
 ∅50 ∅310mm
 EAN 4000870 700488
700.48



Circle Basic

incl. 1x22W, 2GX13
 230V
 ∅50 ∅310mm
 EAN 4000870 700372
700.37





Alpha

1x10W
230V
3000 K
∅150 ⇔150 ⋈32mm
EAN 4000870 701232
701.23



Alpha

1x10W
230V
6500 K
∅150 ⇔150 ⋈32mm
EAN 4000870 701249
701.24



Connector Cable

⇔0,75m
EAN 4000870 701270
701.27 new

Průhledná
Przezroczysty
Прозрачный



Slice LED

1x4,3W 179 lm

3000 K

230V

∅120 ⇔180 ∓480mm

EAN 4000870 702444

702.44 new

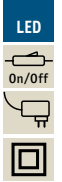
Satén/Hliník kartáčovaný
Satynowany/Alu satynowane
Сатин/Алюминий гeбpстet



**Bay LED**

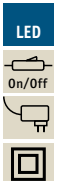
1x5,5W 227 lm
3000 K
230V
∅95 ⇔230 ∅405mm
EAN 4000870 702437
702.43 new

Kartáčované železo
Żelazo szczotkowane
Железо шероховатое

**Zed LED**

1x6,7W 359 lm
3000 K
230V
∅475 ∅160mm
EAN 4000870 702451
702.45 new

Kartáčované železo
Żelazo szczotkowane
Железо шероховатое

**Move LED**

1x5W 188 lm
2900 K
230V
∅200 ⇔535 ∅565mm
EAN 4000870 702482
702.48 new

Černá/Matný chrom
Czarny/Chrom matowy
черный/Хром матовый

**Hood**

incl. 1x20W, E27
230V
∅200 ⇔260 ∅560mm
EAN 4000870 702468
702.46 new
Q 882.21

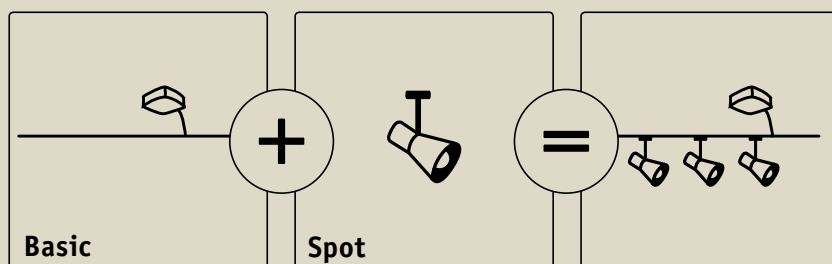
/Matný chrom
Bez/Chrom matowy
Сирень/Хром матовый

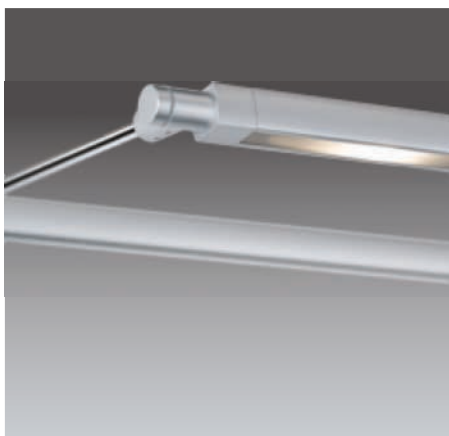


Kombiner selv dit personlige lyssystem

Stwórz sobie sam własny system oświetlenia

Составьте сами собственную световую систему





CM

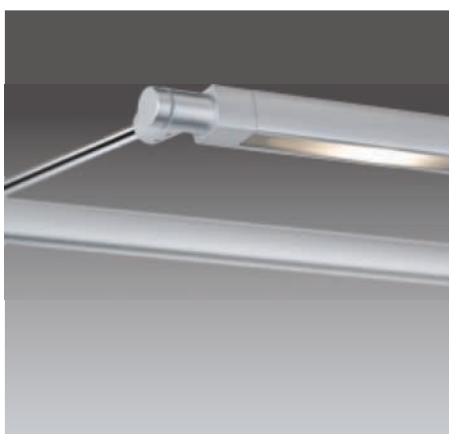
Matný chrom
Chrom matowy
Хром матовый



Line

1x20W 268 lm
3000 K
12V
∅220 ⇔775 ∅20mm
EAN 4000870 951019
951.01 new

LED



CM

Matný chrom
Chrom matowy
Хром матовый



Line

1x10W 179 lm
3000 K
12V
∅220 ⇔525 ∅20mm
EAN 4000870 951026
951.02 new

LED



CM

Matný chrom
Chrom matowy
Хром матовый



Pencil

1x3W 96 lm
3000 K
12V
∅235 ⇔46 ∅42mm
EAN 4000870 951033
951.03 new

LED



CM

Matný chrom
Chrom matowy
Хром матовый



Singin

incl. 1x20W GU4
2900 K
12V
∅231 ⇔100 ∅112mm
EAN 4000870 951040
951.04 new
⊙ 832.13

Halogen
12V





CM
Průhledná
Przezroczysty
Прозрачный

5x
max. 2m

1 Upevnění na stěně
Мосованіе сціенне
Крепление к стене
∅20 ⇔14,5 ⇔37mm
EAN 4000870 951071
951.07 new

2x max.0,5m
3x max.1m



CM
Průhledná
Przezroczysty
Прозрачный



2 Zavěšení
Zawieszenie
Подвешивание
∅18 ⇔19 ⇔2000mm
EAN 4000870 951064
951.06 new

Kg
5



CM
Matný chrom
Chrom matowy
Хром матовый



3 Napájení
Zasilanie
Питание
max. 150W
12V
⇔45mm ⇔2500 ∅14mm
EAN 4000870 951057
951.05 new

Matný chrom
Chrom matowy
Хром матовый

Uline Transfo 60VA

4



max. 60W (50W LED)
230V
∅47 ⇔287 ⇔70mm
EAN 4000870 950500
950.50

Uline Transfo 150VA

4



max. 150W (130W LED)
230V
∅110 ⇔177 ⇔101mm
EAN 4000870 950517
950.51

5



max. 150W 12V
∅13 ⇔13mm ⇔0,5m
EAN 4000870 950470
950.47

∅13 ⇔13mm ⇔1m
EAN 4000870 950487
950.48

∅13 ⇔13mm ⇔2m
EAN 4000870 950494
950.49

6



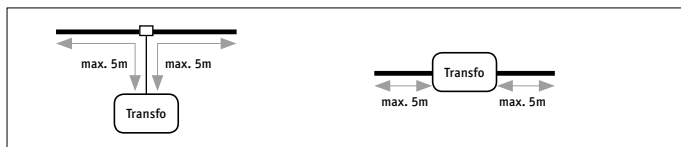
max. 150W 12V
∅35 ⇔15 ⇔14mm
EAN 4000870 950524
950.52

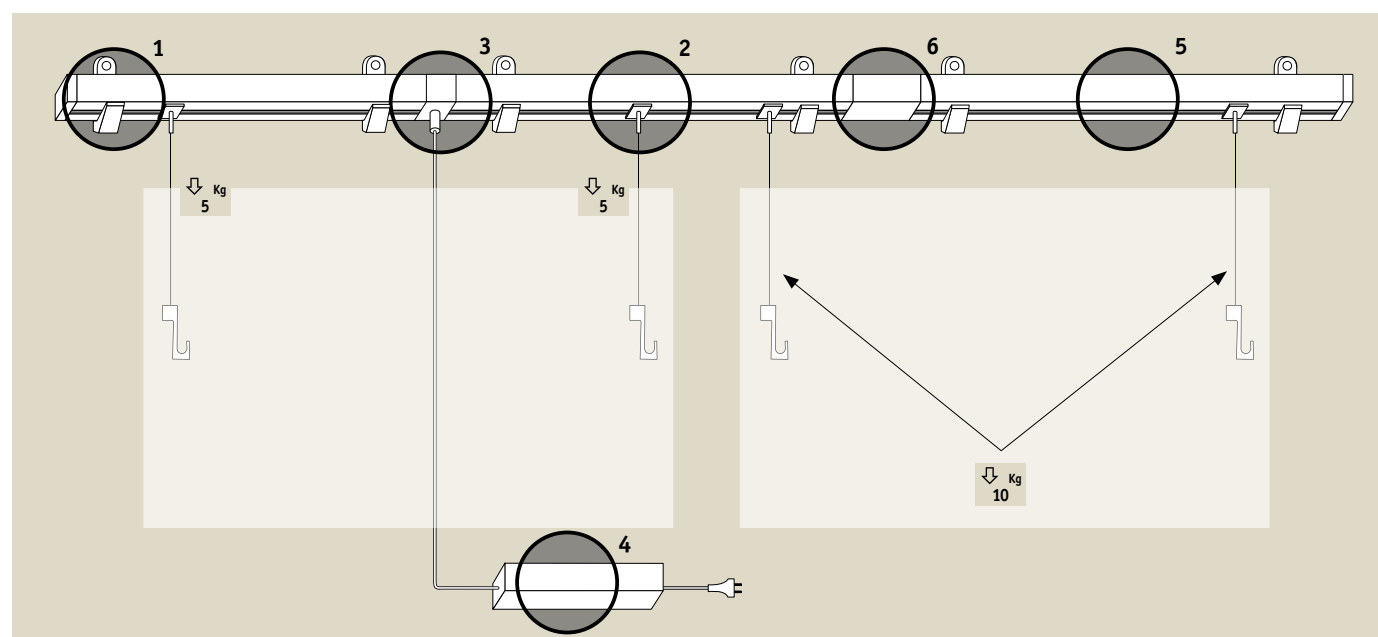


max. 150W 12V
∅15 ⇔53 ⇔14mm
EAN 4000870 950555
950.55



max. 150W 12V
∅15 ⇔170 ⇔14mm
EAN 4000870 950562
950.56







Nikl kartáčovaný/Chrom
Nikiel satynowane/Chrom
Никель, крацеванный/Хром



Channel

1x10W 433 lm
3000 K
230V
∅65 ⇔214 ∅125mm
EAN 4000870 601549
601.54 new



Channel

2x10W 2x433 lm
3000 K
230V
∅65 ⇔343 ∅125mm
EAN 4000870 601556
601.55 new





Bílá/Chrom
Biały/Chrom
Белый/Хром

**Channel**

1x10W 433 lm
3000 K
230V
∅65 ⇔ 214 ∓125mm
EAN 4000870 601563
601.56 new

**Channel**

2x10W 2x433 lm
3000 K
230V
∅65 ⇔ 343 ∓125mm
EAN 4000870 601570
601.57 new



Černá/Chrom
Czarny/Chrom
черный/Хром

**Channel**

1x10W 433 lm
3000 K
230V
∅65 ⇔ 214 ∓125mm
EAN 4000870 601587
601.58 new

**Channel**

2x10W 2x433 lm
3000 K
230V
∅65 ⇔ 343 ∓125mm
EAN 4000870 601594
601.59 new



Chrom
Chrom
Хром

**Sphere**

2x5W 395 lm
2900 K
230V
∅125 ⇔ 182 ∓114mm
EAN 4000870 600382
600.38 new

**Sphere**

2x(2x5W) 2x395 lm
2900 K
230V
∅125 ⇔ 264 ∓114mm
EAN 4000870 600399
600.39 new





Chrom
Chrom
Хром



Ice Cube

1x3W 109 lm
3000 K
230V
∅65 ⇔160 ⚓135mm
EAN 4000870 601662
601.66 new



Ice Cube

2x3W 2x109 lm
3000 K
230V
∅65 ⇔264 ⚓135mm
EAN 4000870 601679
601.67 new



Ice Cube

3x3W 3x109 lm
3000 K
230V
∅65 ⇔465 ⚓135mm
EAN 4000870 601686
601.68 new



Ice Cube

4x3W 4x109 lm
3000 K
230V
∅265 ⇔265 ⚓135mm
EAN 4000870 601693
601.69 new



Matný chrom
Chrom matowy
Хром матовый



Power LED

1x10W 283 lm
2900 K
230V
∅65 ⇔186 ⚓150mm
EAN 4000870 601631
601.63 new



Power LED

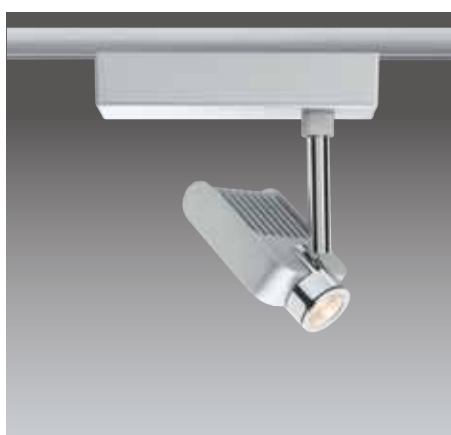
2x10W 2x283 lm
2900 K
230V
∅65 ⇔264 ⚓150mm
EAN 4000870 601648
601.64 new



Power LED

3x10W 3x283 lm
2900 K
230V
∅65 ⇔465 ⚓150mm
EAN 4000870 601655
601.65 new





CM

Matný chrom/Chrom
Chrom matowy/Chrom
Хром матовый/Хром

**Spot Vision**

1x10W 433 lm

3000 K

230V

∅61 ⇄145 ⇄147mm

EAN 4000870 951149

951.14 new

LED



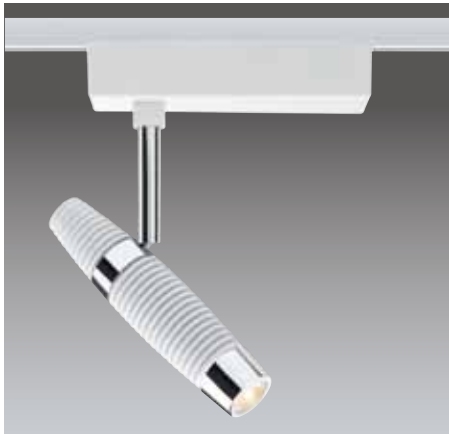
**CM**

Matný chrom/Chrom
Chrom matowy/Chrom
Хром матовый/Хром

**Spot Channel**

1x10W 433 lm
3000 K
230V
∅50 ⇔161 ⇕150mm
EAN 4000870 951118
951.11 new

LED

**W**

Bílá/Chrom
Biały/Chrom
Белый/Хром

**Spot Channel**

1x10W 433 lm
3000 K
230V
∅50 ⇔161 ⇕150mm
EAN 4000870 951125
951.12 new

LED

**C**

Černá/Chrom
Czarny/Chrom
черный/Хром

**Spot Channel**

1x10W 433 lm
3000 K
230V
∅50 ⇔161 ⇕150mm
EAN 4000870 951132
951.13 new

LED





CM

Matný chrom
Chrom matowy
Хром матовый

**Spot Tecno**

incl. 1x50W, GU5,3
230/12V, 70VA
∅83 ⇔112 ⇕180mm
EAN 4000870 950890
950.89 new
💡 832.46

Halogen
12V

c



CM

Matný chrom
Chrom matowy
Хром матовый

**Spot Tecno**

incl. 2x35W GU5,3
230/12V, 70VA
∅83 ⇔183 ⇕180mm
EAN 4000870 950906
950.90 new
💡 832.45
833.64

Halogen
12V

c



CM

Sistema base URailURail
System bazowy
URail Базовая система

max. 1000W
230V ⇔3,10m
EAN 4000870 950166
950.16
Matný chrom
Chrom matowy
Хром матовый



W

Sistema base URailURail
System bazowy
URail Базовая система

max. 1000W
230V ⇔3,10m
EAN 4000870 950173
950.17
Bílá
Biały
Белый



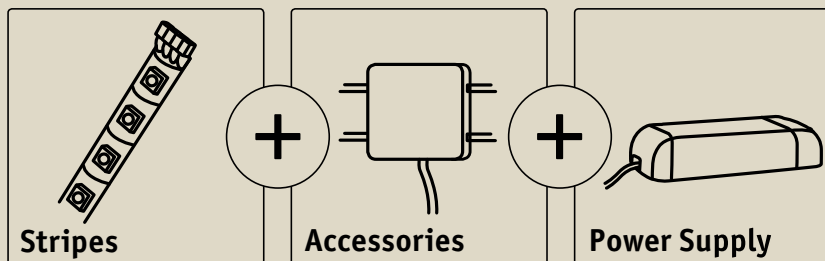
C

Sistema base URailURail
System bazowy
URail Базовая система

max. 1000W
230V ⇔3,10m
EAN 4000870 950180
950.18
Chrom
Chrom
Хром

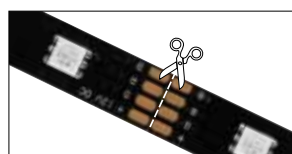
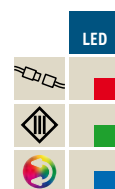


Nakombinujte si sami svůj osobní systém světel
Stwórz sobie sam własny system oświetlenia
Составьте сами собственную световую систему



„3m & 5m new”





ECO Stripe RGB 3m

1x21,6W
 DC 12V
 ∅10,5 ↔3000 ∅2,5mm
 EAN 4000870 702529
702.52 new

Černá
 Czarny
 черный

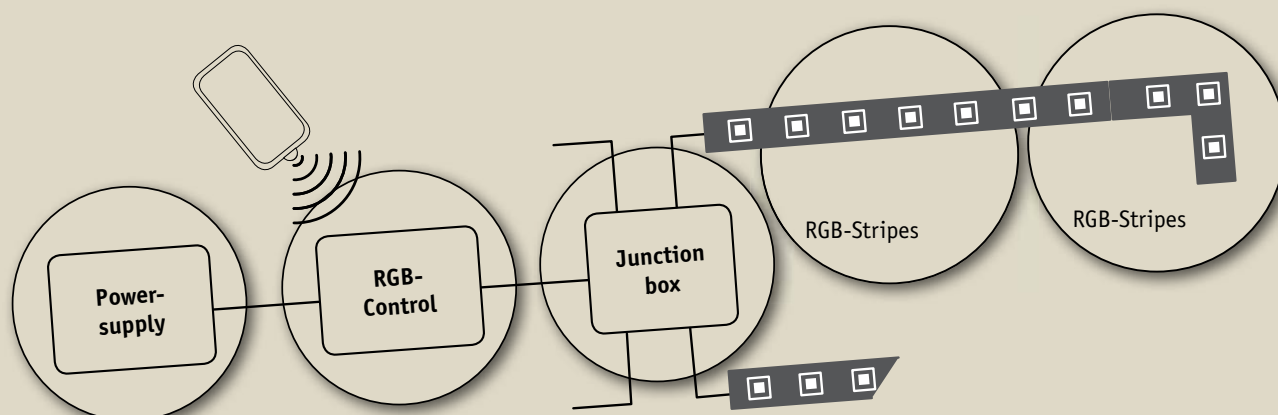


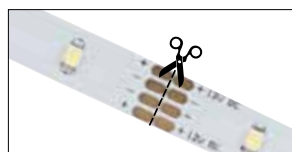
ECO Stripe RGB 5m

1x36W
 DC 12V
 ∅10,5 ↔5000 ∅2,5mm
 EAN 4000870 702536
702.53 new

Černá
 Czarny
 черный

RGB-System:





ECO Stripe Warmwhite 3m

1x7,2W
3000 K
DC 12V
∅10,5 ⇔3000 ⇨2,5mm
EAN 4000870 702543
702.54 new

Bílá
Biały
Белый



ECO Stripe Warmwhite 5m

1x12W
3000 K
DC 12V
∅10,5 ⇔5000 ⇨2,5mm
EAN 4000870 702550
702.55 new

Bílá
Biały
Белый



ECO Stripe Neutralwhite 3m

1x7,2W
4000 K
DC 12V
∅10,5 ⇔3000 ⇨2,5mm
EAN 4000870 702567
702.56 new

Bílá
Biały
Белый



ECO Stripe Neutralwhite 5m

1x12W
4000 K
DC 12V
∅10,5 ⇔5000 ⇨2,5mm
EAN 4000870 702574
702.57 new

Bílá
Biały
Белый



Flex-Connector 500cm

∅5 ⇔13 ⇔5m
EAN 4000870702512
702.51 new

Bílá
Biały
Белый



YourLED Stripe 975mm



YourLED ECO Stripe 500mm



90° Connector Set



YourLED Stripe 975mm



YourLED ECO Stripe 500mm



90° Connector Set



YourLED Stripe 980mm



YourLED Stripe 980mm



YourLED ECO Stripe 500mm



90° Connector Set



Flex-Connector 10cm / 100cm



Junctionbox



RGB-Control DC 12V



Water-Protection 15cm



Special Line Junction box



IR-Sensor



ECO Clip-Connector 2x



Power Supply 15W 230/12V DC



Power Supply 48W 230/12V DC



Power Supply 60W 230/12V DC

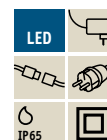
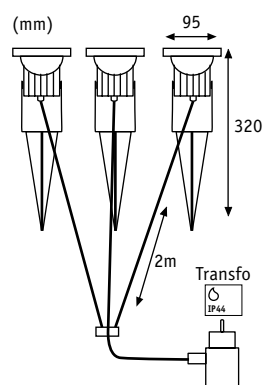


	15W Power Supply	48W Power Supply	60W Power Supply
	max.		
YourLED	4m	15m (9m + 6m)*	19m (9m + 9m + 1m)*
YourLED RGB	1m	5m (4m + 1m)*	6m (4m + 2m)*
YourLED ECO	6m	20m (12m + 8m)*	25m (12m + 12m + 1m)*
YourLED ECO RGB	2m	6,5m (6m + 0,5m)*	8m (6m + 2m)*

K plnému využití výkonu systému použijte rozdělovač 702.03.
 Aby w pełni wykorzystać moc systemu, należy użyć skrzynki przyłączonej 702.03.
 С целью полного использования возможностей системы следует использовать клеммную коробку Junction-Box 702.03.







Special Line Garden Spot LED



Hliník Alu Алюминий

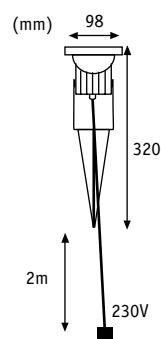
incl. 3x1W

3000 K

6VA

EAN 4000870 937501

937.50 new



280.56 1x3,5W
280.57 1x3,5W
892.38 1x9W
800.35 1x28W



Special Line Garden Spot



Hliník Alu Алюминий

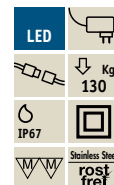
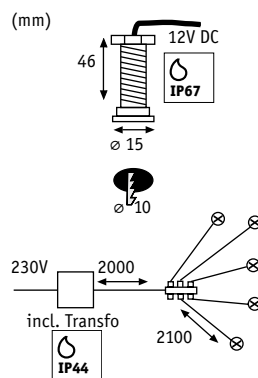
max. 28W

GU10

230V

EAN 4000870 937518

937.51 new



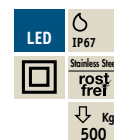
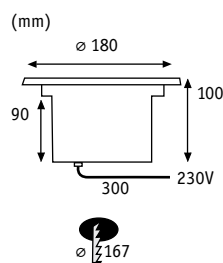
Special Line MicroPen IP67

Nerezová ocel stal szlachetna сталь



incl. 5x0,16W

6VA 12V DC
 ✕ 30°
 3000 K
 5x1,4 cd
 EAN 4000870 937549
937.54 new



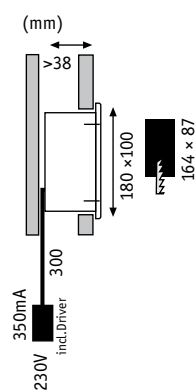
Special Line Floor LED 2,1W

Nerezová ocel stal szlachetna сталь



incl. 1x2,1W

3,6VA
 6500 K
 EAN 4000870 937464
937.46 new



Special Line Wall LED Cross

Hliník kartáčovaný Alu satynowane Aluminiij gebrystet



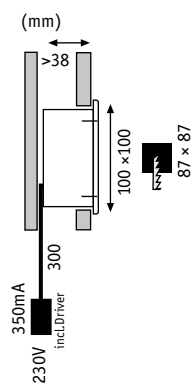
incl. 1x4W

6VA

3000 K

EAN 4000870 937525

937.52 new



Special Line Wall LED Quadro

Hliník kartáčovaný Alu satynowane Aluminiij gebrystet



incl. 1x2W

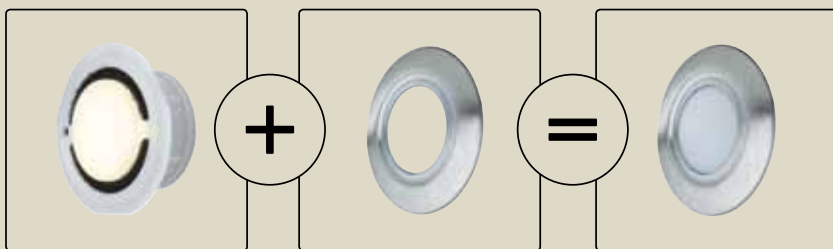
3VA

3000 K

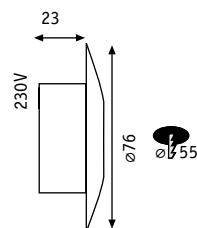
EAN 4000870 937532

937.53 new

Nakombinujte si sami svůj osobní systém světel
Stwórz sobie sam własny system oświetlenia
Составьте сами собственную световую систему



(mm)



Special Line IP65 Downlight Basic



Opál Opal Опал

incl. 1x1,4W
 3000 K
 EAN 4000870 937402
937.40 **new**

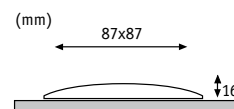
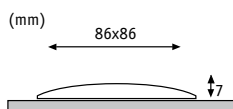
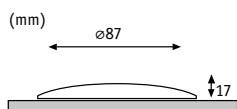


Opál Opal Опал

incl. 1x1,4W
 4000 K
 EAN 4000870 937419
937.41 **new**



Nerezová ocel stal szlachetna сталь



Special Line Cover round

Special Line Cover Cap round

Special Line Cover square

Special Line Cover Cap square



Stainless Steel
rosthref

EAN 4000870 937426
937.42 **new**



Stainless Steel
rosthref

EAN 4000870 937433
937.43 **new**



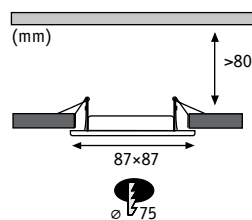
Stainless Steel
rosthref

EAN 4000870 937440
937.44 **new**



Stainless Steel
rosthref

EAN 4000870 937457
937.45 **new**



832.44 1x20W
832.45 1x35W



Premium Line IP65 Quadro

Bílá Biały Белый

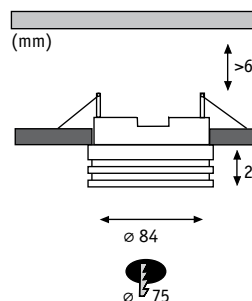


incl. 1x35W

70VA

EAN 4000870 925287

925.28 new



832.44 1x20W
832.45 1x35W



Premium Line Curl

Hliník Alu Алюминий



max. 35W

incl. 3x35W

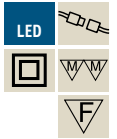
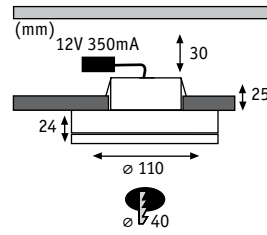
105VA

EAN 4000870 925508

EAN 4000870 925485

925.50 new

925.48 new

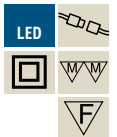
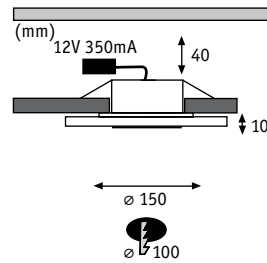


Premium Line Circle

Hliník matný/Satén Alu mat/Satynowany Aluminiowy matowy/Catin



incl. 3x5W
 3000K
 18VA 350mA
 EAN 4000870 925423
925.42 new

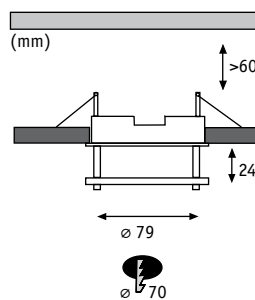


Premium Line Whirl

Matný chrom/Satén Chrom matowy/Satynowany Хром матовый/Catin



incl. 3x6W
 3000K
 18VA 350mA
 EAN 4000870 925430
925.43 new



832.44 1x20W
832.45 1x35W



Premium Line Level

Kartáčované železo/Satén/Čírá Želazo szczotkowane/Satynowany/Przezroczysty Железо шероховатое/Сатин/Прозрачный



max. 35W

incl. 3x35W

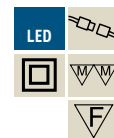
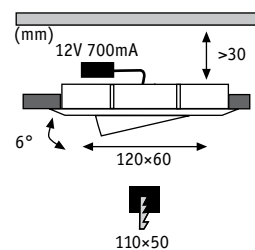
105VA

EAN 4000870 925515

925.51 **new**

EAN 4000870 925492

925.49 **new**



Premium Line Drilled Alu Duo LED

Čírá/Chrom Przezroczysty Прозрачный



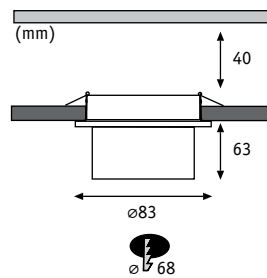
incl. 2x3W

9VA 700mA

3000K

EAN 4000870 925379

925.37 **new**



Quality Line Glassy Tube

Čirá/Chrom Przezroczysty/Chrom Прозрачный/Хром



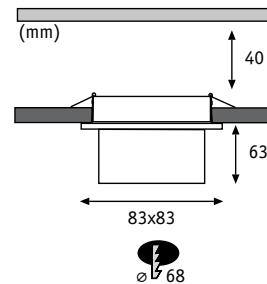
max. 20W

EAN 4000870 920190
920.19 new



incl. 3x1W

3000 K
3,6VA
EAN 4000870 920213
920.21 new



Quality Line Glassy Cube

Čirá/Chrom Przezroczysty/Chrom Прозрачный/Хром



max. 20W

EAN 4000870 920176
920.17 new



280.91 1W 831.15 10W
831.17 20W



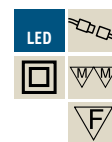
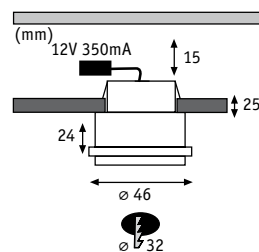
incl. 3x10W

60VA
2900 K
EAN 4000870 920183
920.18 new



831.15 10W
831.17 20W





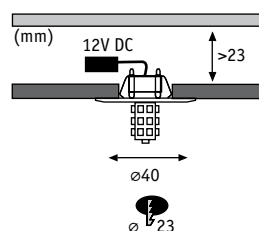
Star Line Step

Hliník/Matný chrom Alu/Chrom matowy Aluminiy/Хром матовый

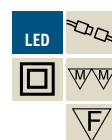


3x1W

3VA 350mA
EAN 4000870 925447
925.44 new



280.91 1W



Star Line LED

Kartáčované železo Żelazo szczotkowane Железо шероховатое



incl.5x1w

7VA 12V DC
3000 K
EAN 4000870 925454
925.45 new



LED-Driver Disc 350mA 9W



max.9W
350mA
∅24 ø52mm
EAN 4000870 977385
977.38 new

Bílá
Biały
Белый

LED-Driver Disc 700mA 12W

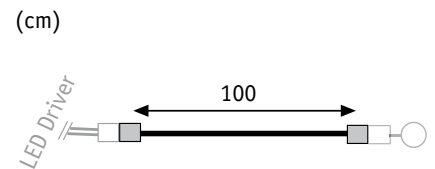
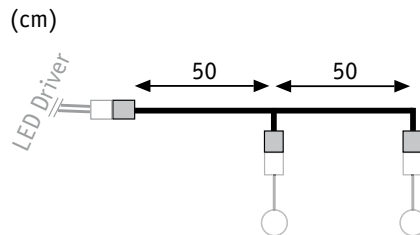
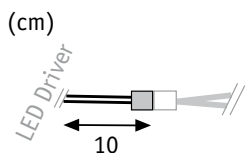


max.12W
700mA
∅24 ø52mm
EAN 4000870 977378
977.37 new

Bílá
Biały
Белый



Stikforbindelse
z wymiennym kloszem
С разъёмом



**JST, 10cm,
350, 500, 700, 1000mA**
max. 30W
EAN 4000870 002285
228

**JST, 100cm,
350, 500, 700, 1000mA**
max. 30W
EAN 4000870 002292
229

**JST, 100cm,
350, 500, 700, 1000mA**
max. 30W
EAN 4000870 002339
233





Hřejivá bílá Ciepłobiały Tёплый Белый

Energy Saver

W	⊖	∅ mm	⇅ mm	✕	⌚	K	cd	Energy	⊞	EAN	⊞	
7	E27	63	124	80°	10.000	2700	30	6		4000870 892466		new 892.46

LED 12V



Hřejivá bílá Ciepłobiały Tёплый Белый

LED

W	⊖	∅ mm	⇅ mm	✕	⌚	K	cd	Energy	⊞	EAN	⊞	
1,5	GU5,3	37	45	110°	30.000	3000	20	10		4000870 281376		new 281.37

2VA



Hřejivá bílá Ciepłobiały Tёплый Белый

LED

W	⊖	∅ mm	⇅ mm	✕	⌚	K	cd	Energy	⊞	EAN	⊞	
2	GU5,3	51	45	110°	30.000	3000	30	10		4000870 281383		new 281.38

2,5VA

LED 230V



Hřejivá bílá Ciepłobiały Tёплый Белый

LED

W	⊖	∅ mm	⇅ mm	✕	⌚	K	lm	Energy	⊞	EAN	⊞	*
2	E27	35	129		30.000	3000	148	8		4000870 281390		new 281.39



Hřejivá bílá Ciepłobiały Tёплый Белый

LED

W	⊖	∅ mm	⇅ mm	✕	⌚	K	lm	Energy	⊞	EAN	⊞	*
2	E14	35	99		30.000	3000	148	8		4000870 281406		new 281.40

*

Právo na změny výrobku vyhrazeno. k dodání od 06.2012
 Zastrzega się prawo do wprowadzenia zmian. Dostępny od 06.2012
 Производитель сохраняет за собой право на модификации изделия. Доступные от 06.2012

